

TATTOO
MANCHESTER

Group Dining & Events Christmas Brochure

Main Restaurant



Our main restaurant located on the first floor can be hired exclusively for a seated dinner of up to 100 guests across a selection of booths and cherry blossom tables.

Options may vary depending individual requirements please contact the team for further information.





The Parlour



The Parlour is Tattu Manchester's private dining room and exclusive event space. The space is serviced by its own entrance, bar and rest-rooms, whilst one-way glass offers complete privacy for the dining room with a view into the scenic Rose Garden and main restaurant above.

The Parlour can accommodate up to 45 guests for seated dining, or up to 60 guests for a canapé event.

The Rose Garden



The ground floor indoor Rose Garden is perfect for group bookings looking for a more lively and integrated occasion.

Each booth seats between 6 to 8 guests surrounded by the unique anchor pendants that cement Manchester as the brand's home city.

The Rose Garden can also be hired for a canapé and drinks reception and will hold up to 100 guests exclusively.



Food Ethos



Tattu offers a modern take on Chinese cuisine, blending traditional flavours with innovative techniques and premium ingredients.

Our menus are curated seasonally, encouraging sharing and celebrating the art of contemporary dining.

Founded in 2015 by two brothers, Tattu was created to bring a unique, sensory experience to the UK where stunning design, bold flavours, and exceptional service come together.

Each restaurant, including Tattu Manchester, reflects its city's character while staying true to our brand's commitment to beauty and craft.



Drinks Ethos



Tattu's drinks philosophy mirrors our approach to food—innovative, refined, and designed to elevate the entire dining experience.

Our cocktail menu showcases bold, contemporary serves that fuse Eastern flavours with cutting-edge mixology, combining premium spirits with unique ingredients for drinks that are as memorable as they are beautiful.

Our wine, spirits, and sake lists are thoughtfully curated to complement the depth and complexity of our cuisine, with a focus on quality, balance, and discovery.

Whether it's a theatrical cocktail, a rare vintage, or a perfectly paired tea, every drink at Tattu is part of a journey, crafted to delight the senses and make a lasting impression.

Venue Hire



This space holds up to 190 guests for a seated dining event or up to 200 for a drinks and canapé event.

Our entire team are committed to your every need and event requirements, to provide your group with an exceptional dining experience, selecting one of our specially curated sharing menus or choosing small plates and Dim Sum from our canapé menu.

All spends are inclusive of all food and drink ordered but exclusive of VAT and a discretionary service charge.

DEPOSIT & PAYMENT REQUIREMENTS

For group reservations of up to 30 guests, a deposit of £20 per person is required upon booking to secure the reservation.

For full venue hire, a deposit of 50% the minimum spend is required upon booking to secure the reservation.

Prices may vary seasonally, please contact the team directly for a confirmed quote





Hire Charge



NON PRIVATE DINING ACROSS ALL AREAS

10-50 guests from £740

PRIVATE DINING IN THE PARLOUR

Sunday-Friday from £1,500

Saturday from £2,000

ROSE GARDEN HIRE

Afternoon from £5,000

Evening from £8,000

Friday-Saturday from £12,000

FULL VENUE HIRE

Sunday-Thursday afternoon from £10,000

Sunday-Thursday evening from £18,000

Friday-Saturday evening from £50,000

Sample Menu

Starting from 74.00 per person | Minimum 2 people

Menus and prices are subject to change

Modern Sharing



WAVE ONE

LOBSTER AND PRAWN TOAST

Coconut, lime & chilli foam.

WAGYU BEEF DUMPLING

Sriracha, kimchi and spring onion.

SESAME SALAD

Kohlrabi, crispy eddo and pink radish.



WAVE TWO

BLACK PEPPER BEEF FILLET

Wok fired peppers and shallots.

SHANGHAI BLACK COD

Hoisin, ginger and lime.

TENDERSTEM BROCCOLI

Black sesame and truffle.

STEAMED JASMINE RICE



WAVE THREE

YUZU LEMON DROP ^(N)

Passion fruit, shisho and almond.

^(N) Contains nuts





Canapé Menu

Example Canapés
Available for groups of 16+ only.

| | |
|---|-------|
| <hr/> | |
| SURF & TURF SHUMAI | 5.00 |
| Beef short rib, King prawn and sesame. | |
| PAN SEARED PORK DUMPLING | 4.00 |
| Black pepper pork. | |
| AROMATIC DUCK SPRING ROLLS (H) | 3.00 |
| Cherry hoisin sauce. | |
| SPICY SESAME TUNA TARTARE | 5.00 |
| Caviar, lotus root and ginger soy. | |
| SZECHUAN ROCK SHRIMP (H) | 4.50 |
| Carrot, sansho pepper and pickle. | |
| LOBSTER AND PRAWN TOAST (H) | 4.50 |
| Coconut, lime & chilli foam. | |
| X.O. SCALLOP SKEWERS | 9.00 |
| Pancetta, chilli and pork floss. | |
| HONEY GLAZED CHAR SIU PORK | 5.50 |
| Caramelised orange. | |
| WILD MUSHROOM AND BLACK TRUFFLE SPRING ROLLS (V) (H) | 3.50 |
| Sweet & sour soy. | |
| KUNG PO TOFU (V) (H) 🌿 | 3.50 |
| Pineapple, green beans and lotus. | |
| CRISPY PORK BELLY | 4.00 |
| Black vinegar and coriander. | |
| GREEN PEPPER LOBSTER (H) | 8.00 |
| Jalapeños and crispy shallots. | |
| JAPANESE BLACK WAGYU | 14.00 |
| Himalayan salt block, enoki mushroom and shallot soy. | |

Drinks Packages

KOI

£38PP

Glass of Prosecco or bottle of Asahi

One bottle of wine between two guests

Gewurztraminer or Montepulciano D'abruzzo

50ml Umeshu

TIGER

£48PP

Glass of Prosecco or bottle of Lucky Buddha

One bottle of wine between two guests

Sauvignon Blanc Babich or Winemaker's Reserve Norton Malbec

Skull Candy

PHOENIX

£62PP

Glass of EPC Brut or Against the Current

One bottle of wine between two guests

Petit Chablis J.M Brocard or Barbera D'Alba

Shanghai Clipper or Mandopop Bellini

DRAGON

£115PP

Glass of Laurent-Perrier or Choice of signature cocktail

One bottle of wine between two guests

Sancerre or Valpolicella Classico Superiore

10ml Louis XIII



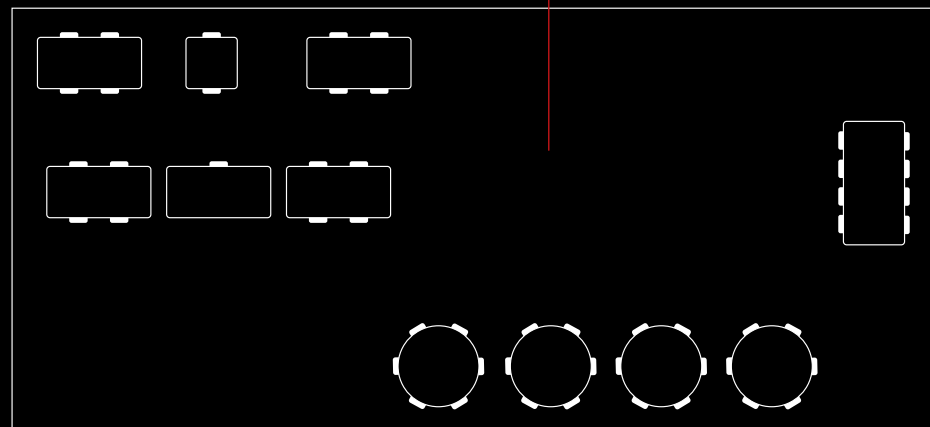
Venue Floor Plan



At Tattu, we offer a stunning space designed to elevate your special occasion.

This floor plan showcases our signature layout, but we're adaptable to create the perfect setting for your event.

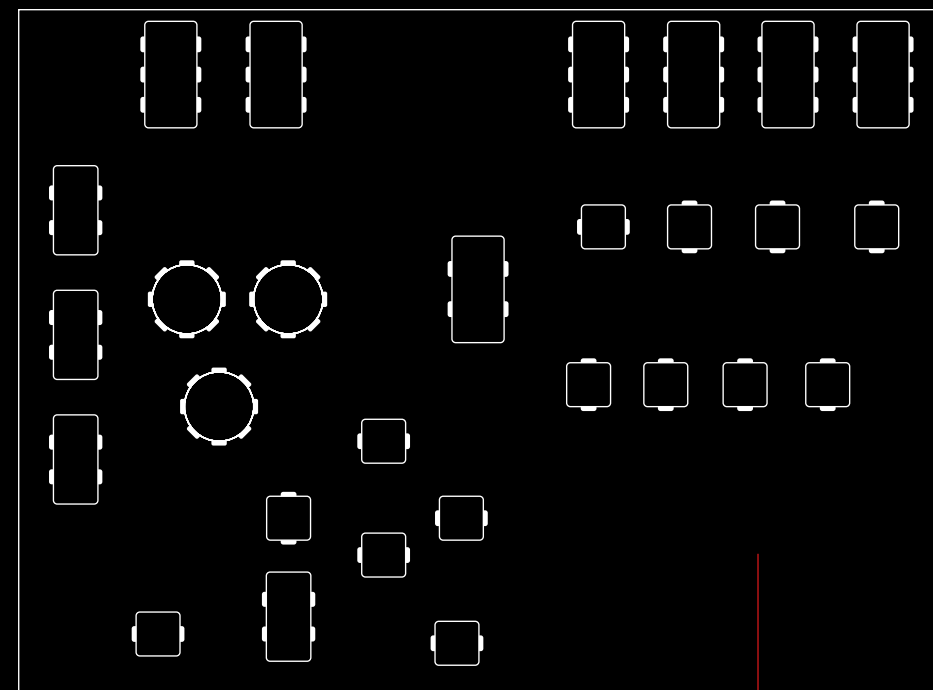
DOWNSTAIRS



ROSE GARDEN

THE PARLOUR

UPSTAIRS



MAIN RESTAURANT



It's All in the Details



MAKE YOUR EVENT TRULY UNIQUE

We offer a range of bespoke enhancements to make your occasion unforgettable.

BRANDED DIGITAL SIGNAGE & PROJECTIONS

Feature your logo or custom visuals on our digital screens and in-house projectors to make a lasting impression.

CHERRY BLOSSOM TRANSFORMATION

Customise our iconic cherry blossom trees to match your brand's colours for a breathtaking visual effect. (Only in tattu brochure)

BESPOKE MENUS

Custom-designed menus featuring your event name, company branding, or a personalised message for your guests.

ELEGANT NAME CARDS

Individually printed name cards to add a refined, personal touch to your table settings.

LIVE DJ

Set the perfect tone for your event with a DJ curated to match your theme and atmosphere.*

PROFESSIONAL PHOTOGRAPHER

Capture every moment with a dedicated photographer to document your event beautifully.*

SIGNATURE COCKTAILS

Work with our expert mixologists to create a one-of-a-kind cocktail inspired by your brand or occasion.

**Some enhancements are available exclusively for full venue hires. For certain services, we can connect you with our trusted suppliers. Prices may vary.*

TATTOO

MANCHESTER



Click Play to Watch our Interior Video or Visit:

<https://vimeo.com/manage/videos/1093657767>



Louis

Fine Italian-American cuisine. Never complicated.

FENIX

Modern Greek-Mediterranean dining.



Permanently *Unique*

PRIVATE DINING AND EVENTS

Each Permanently Unique Group restaurant offers private, semi-private and full venue hire.
Turn your event into a transportive experience. From 1950s New York at Louis,
the isles of Mykonos at Fenix or to the far East at Tattu.

Scan for more information

Louis



Fenix



@permanentlyuniquegroup
permanentlyunique.com

T A T T U
L O N D O N

Tattu London
The Now Building Rooftop
Outernet, Denmark Place
WC2H 0LA

T A T T U
E D I N B U R G H

Tattu Edinburgh
18W Register St,
Edinburgh,
EH2 2AA

T A T T U
B I R M I N G H A M

Tattu Birmingham
18 Barwick St,
Birmingham,
B3 2NT

T A T T U
L E E D S

Tattu Leeds
Minerva,
29 E Parade,
Leeds, LS1 5PS

To view events brochures for
our other locations please scan
the QR code below.



T A T T U
M A N C H E S T E R

Tattu Manchester
3 Hardman Square,
Gartside St,
Manchester, M3 3EB

For more information,
please contact our team:
0161 819 2060
manchester@tattu.co.uk
@tatturestaurant
Tattu.co.uk