

TATTO  
BIRMINGHAM

Group Dining & Events Christmas Brochure





# Large Party Yin Area



Our traditional wooden fretwork and carefully styled lighting casts shadows and create the effect of waterfalls down our granite walls.

Our exclusive semi private dining area in the Yin section comfortable seats up to 24 guests, providing an ideal setting for an intimate gathering.

Additionally we offer the option of reserving the entire space catering for up to 80 guests.



# Yang Private Dining



Yang is the light element linked with masculinity, growth and fire. This new design is featured in our ground floor bar and dining areas. Utilising light natural materials and imported stone, the space represents the growth of our family business into new realms offering a new take on the traditional Tattu design.

Polished brass reflects light to create a warm glow throughout; the perfect environment to relax with one of our signature cocktails.

Hire our semi-private dining area located in the Yang space for between 10 – 16 guests.





# Food Ethos



Tattu offers a modern take on Chinese cuisine, blending traditional flavours with innovative techniques and premium ingredients.

Our menus are curated seasonally, encouraging sharing and celebrating the art of contemporary dining.

Founded in 2015 by two brothers, Tattu was created to bring a unique, sensory experience to the UK where stunning design, bold flavours, and exceptional service come together.

Each restaurant, including Tattu Birmingham, reflects its city's character while staying true to our brand's commitment to beauty and craft.





# Drinks Ethos



Tattu's drinks philosophy mirrors our approach to food—innovative, refined, and designed to elevate the entire dining experience.

Our cocktail menu showcases bold, contemporary serves that fuse Eastern flavours with cutting-edge mixology, combining premium spirits with unique ingredients for drinks that are as memorable as they are beautiful.

Our wine, spirits, and sake lists are thoughtfully curated to complement the depth and complexity of our cuisine, with a focus on quality, balance, and discovery.

Whether it's a theatrical cocktail, a rare vintage, or a perfectly paired tea, every drink at Tattu is part of a journey, crafted to delight the senses and make a lasting impression.



# Venue Hire



This space holds up to 150 guests for a seated dining event or, up to 200 for a drinks and canapé event.

Our entire team are committed to your every need and event requirements, to provide your group with an exceptional dining experience, selecting one of our specially curated sharing menus or choosing small plates and Dim Sum from our canapé menu.

---

*All spends are inclusive of all food and drink ordered but exclusive of VAT and a discretionary service charge.*

## DEPOSIT & PAYMENT REQUIREMENTS

For group reservations of up to 30 guests, a deposit of £20 per person is required upon booking to secure the reservation.

For full venue hire, a deposit of 50% the minimum spend is required upon booking to secure the reservation.

*Prices may vary seasonally, please contact the team directly for a confirmed quote*







# Hire Charge



---

## YANG PRIVATE DINING ROOM

Sunday-Thursday afternoon	from £1,000
Sunday-Thursday evening	from £1,200
Friday-Saturday afternoon	from £1,500
Friday-Saturday evening	from £2,000

---

## LARGE PARTY YIN AREA

Sunday-Thursday afternoon	from £1,500
Sunday-Thursday evening	from £2,000
Friday-Saturday afternoon	from £2,000
Friday-Saturday evening	from £2,500

---

## FULL VENUE HIRE

Sunday-Thursday afternoon	from £10,000
Sunday-Thursday evening	from £15,000
Friday-Saturday afternoon	from £12,000
Friday-Saturday evening	from £18,000

# Sample Menu

Starting from 74.00 per person | Minimum 2 people

*Menus and prices are subject to change*

## Modern Sharing



### WAVE ONE

#### LOBSTER AND PRAWN TOAST

Coconut, lime & chilli foam.

#### WAGYU BEEF DUMPLING

Sriracha, kimchi and spring onion.

#### SESAME SALAD

Kohlrabi, crispy eddo and pink radish.



### WAVE TWO

#### BLACK PEPPER BEEF FILLET

Wok fired peppers and shallots.

#### SHANGHAI BLACK COD

Hoisin, ginger and lime.

#### TENDERSTEM BROCCOLI

Black sesame and truffle.

#### STEAMED JASMINE RICE



### WAVE THREE

#### YUZU LEMON DROP <sup>(N)</sup>

Passion fruit, shisho and almond.

<sup>(N)</sup> Contains nuts







# Canapé Menu

Example Canapés  
Available for groups of 16+ only.

SURF & TURF SHUMAI	4.00
Beef short rib, King prawn and sesame.	
PAN SEARED PORK DUMPLING	4.00
Black pepper pork.	
AROMATIC DUCK SPRING ROLLS (H)	3.00
Cherry hoisin sauce.	
SPICY SESAME TUNA TARTARE	5.00
Caviar, lotus root and ginger soy.	
SZECHUAN ROCK SHRIMP (H)	4.50
Carrot, sansho pepper and pickle.	
LOBSTER AND PRAWN TOAST (H)	4.50
Coconut, lime & chilli foam.	
X.O. SCALLOP SKEWERS	9.00
Pancetta, chilli and pork floss.	
HONEY GLAZED CHAR SIU PORK	5.50
Caramelised orange.	
WILD MUSHROOM AND BLACK TRUFFLE SPRING ROLLS (V) (H)	3.50
Sweet & sour soy.	
KUNG PO TOFU (V) (H) 🌿	3.50
Pineapple, green beans and lotus.	
CRISPY PORK BELLY	4.00
Black vinegar and coriander.	
GREEN PEPPER LOBSTER (H)	8.00
Jalapeños and crispy shallots.	
JAPANESE BLACK WAGYU	14.00
Himalayan salt block, enoki mushroom and shallot soy.	





## Drinks Packages

---

### KOI

£38PP

Glass of Prosecco or bottle of Asahi

*One bottle of wine between two guests*

Gewurztraminer or Montepulciano D'abruzzo

50ml Umeshu

---

### TIGER

£48PP

Glass of Prosecco or bottle of Lucky Buddha

*One bottle of wine between two guests*

Sauvignon Blanc Babich or Winemaker's Reserve Norton Malbec

Skull Candy

---

### PHOENIX

£62PP

Glass of EPC Brut or Against the Current

*One bottle of wine between two guests*

Petit Chablis J.M Brocard or Barbera D'Alba

Shanghai Clipper or Mandopop Bellini

---

### DRAGON

£115PP

Glass of Laurent-Perrier or Choice of signature cocktail

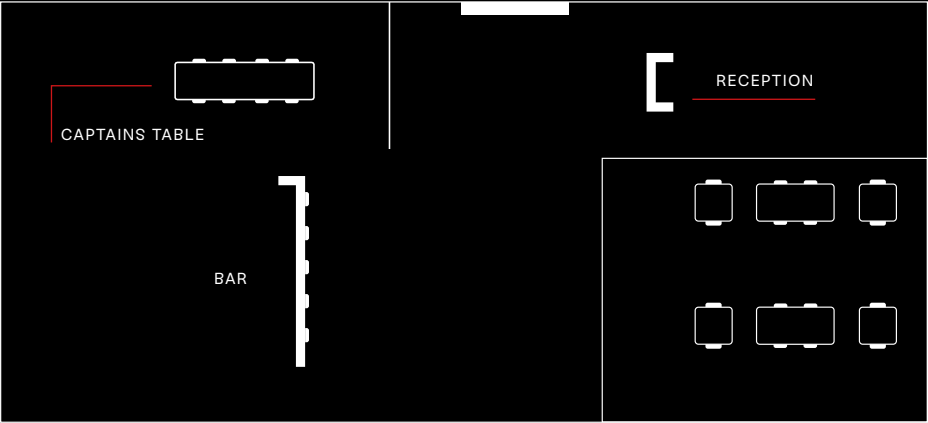
*One bottle of wine between two guests*

Sancerre or Valpolicella Classico Superiore

10ml Louis XIII



UPSTAIRS



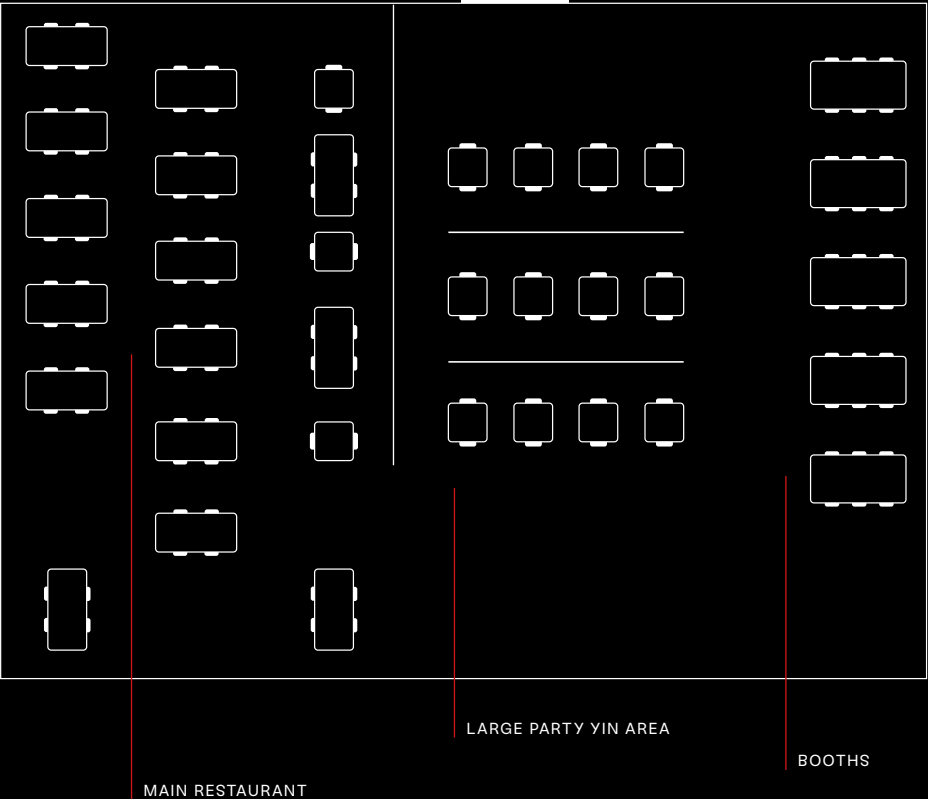
# Venue Floor Plan



At Tattu, we offer a stunning space designed to elevate your special occasion.

This floor plan showcases our signature layout, but we're adaptable to create the perfect setting for your event.

DOWNSTAIRS







# It's All in the Details



## MAKE YOUR EVENT TRULY UNIQUE

We offer a range of bespoke enhancements to make your occasion unforgettable.

---

### BRANDED DIGITAL SIGNAGE & PROJECTIONS

Feature your logo or custom visuals on our digital screens and in-house projectors to make a lasting impression.

---

### ELEGANT NAME CARDS

Individually printed name cards to add a refined, personal touch to your table settings.

---

### CHERRY BLOSSOM TRANSFORMATION

Customise our iconic cherry blossom trees to match your brand's colours for a breathtaking visual effect. (Only in tattü brochure)

---

### LIVE DJ

Set the perfect tone for your event with a DJ curated to match your theme and atmosphere.\*

---

### BESPOKE MENUS

Custom-designed menus featuring your event name, company branding, or a personalised message for your guests.

---

### PROFESSIONAL PHOTOGRAPHER

Capture every moment with a dedicated photographer to document your event beautifully.\*

---

### SIGNATURE COCKTAILS

Work with our expert mixologists to create a one-of-a-kind cocktail inspired by your brand or occasion.

*\*Some enhancements are available exclusively for full venue hires. For certain services, we can connect you with our trusted suppliers. Prices may vary.*



# TATTO

BIRMINGHAM



Click Play to Watch our Interior Video or Visit:

<https://vimeo.com/manage/videos/1093659806>





Louis

*Fine Italian-American cuisine. Never complicated.*

FENIX

Modern Greek-Mediterranean dining.



Permanently *Unique*

PRIVATE DINING AND EVENTS

Each Permanently Unique Group restaurant offers private, semi-private and full venue hire.  
Turn your event into a transportive experience. From 1950s New York at Louis,  
the isles of Mykonos at Fenix or to the far East at Tattu.

Scan for more information

Louis



Fenix



@permanentlyuniquegroup  
permanentlyunique.com



T A T T U  
L O N D O N

Tattu London  
The Now Building Rooftop  
Outernet, Denmark Place  
WC2H 0LA

T A T T U  
E D I N B U R G H

Tattu Edinburgh  
18W Register St,  
Edinburgh, EH2 2AA

T A T T U  
M A N C H E S T E R

Tattu Manchester  
3 Hardman Square,  
Gartside St,  
Manchester, M3 3EB

T A T T U  
L E E D S

Tattu Leeds  
Minerva,  
29 E Parade,  
Leeds, LS1 5PS

To view events brochures for  
our other locations please scan  
the QR code below.



T A T T U  
B I R M I N G H A M

Tattu Birmingham  
18 Barwick St,  
Birmingham, B3 2NT

For more information,  
please contact our team:  
0121 236 5556  
birmingham@tattu.co.uk  
@tatturestaurant  
Tattu.co.uk